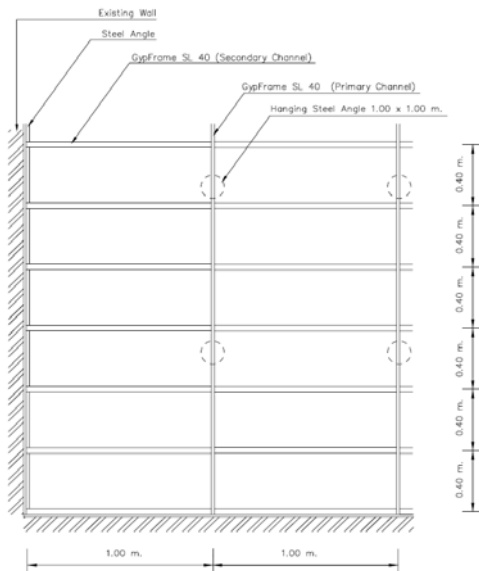
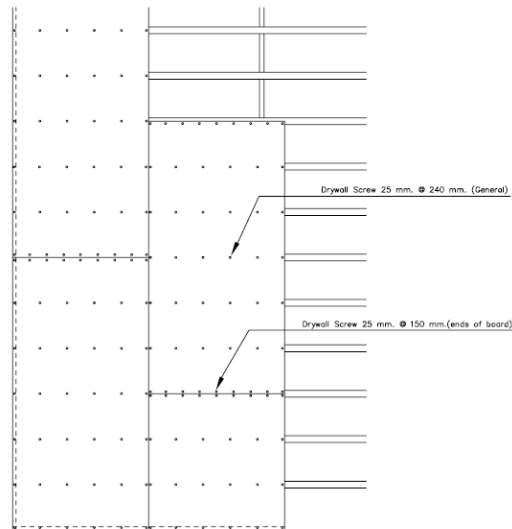


## Installation of CasoLine® Concealed Ceiling System

1. Determine the required ceiling level and mark the line on wall for ceiling level. Then fix steel angle GypFrame™ GA1 on this line level.
2. Use GypFrame™ GA1 as hanger set by fixing on soffit with expansion bolt 6mm at spacing 1.00m x 1.00m.
3. Use GypFrame™ SL40 as primary channel. Hang and fix it to GypFrame™ GA1 by screw fixing at every 1.00m interval to complete the primary channel.
4. Install the secondary channel by using GypFrame™ SL40 channel by running underside of primary channel at spacing 40cm. Connect together by connecting clip SL9.
5. Fix GypBoard™ to secondary channel with drywall screws spacing 24cm and reduces to 15cm at the end board.
6. Finish the joint with Gyproc ProTop™ All Purpose Ready-Mixed Joint Compound before painting and decorating.



**Framing System Spacing**



**GypBoard™ Layout Fixing**